

CEMENT

Mortar Cement

Specify Lafarge Mortar Cement for your architectural, structural, seismic and construction requirements.



bringing materials to *life*™



Lafarge in North America

The Lafarge Group is the world leader in building materials, with top-ranking positions in all of its businesses: Cement, Aggregates & Concrete and Gypsum. The Group employs 78,000 employees in 78 countries. Lafarge is the largest diversified supplier of construction materials in the United States and Canada.

The Lafarge Group places innovation at the heart of its priorities, working for sustainable construction and architectural creativity.



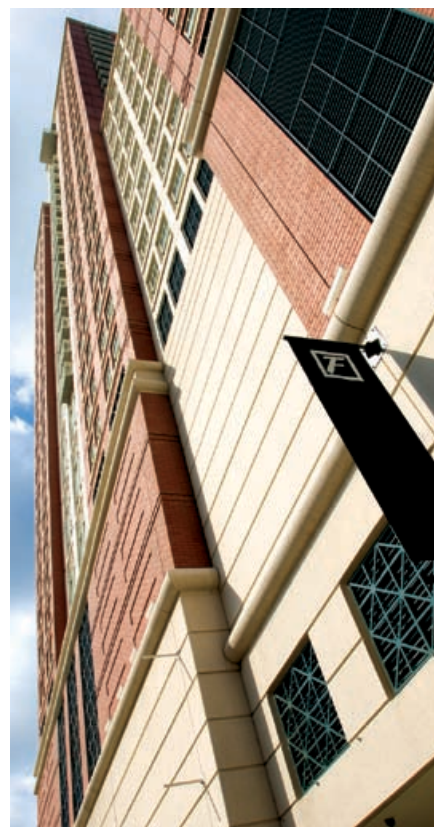
Lafarge Mortar Cement is suitable for all masonry construction, especially projects that require higher flexural bond and compressive strengths. Superior performance extends to such key areas as durability, weather resistance and aesthetics.

> **Bond and Compressive Strengths.** In independent testing, mortars made with Lafarge Mortar Cement exceeded the flexural bond strengths required in:

- ASTM C 1329 *Standard Specification for Mortar Cement*;
- International Building Code Standard 2103.7 *Mortar* and
- CSA-A3002 *Masonry and Mortar Cement*.

They also achieved flexural bond and compressive strengths that meet all seismic zone requirements – enhancing structural stability and maintaining the margin of safety.

> **Durability.** Independent lab tests confirm that mortars made with Lafarge Mortar Cement perform equal to or better than those made with portland cement and lime on both high and low IRA brick.



Physical Requirements for Mortar Cement

Based upon ASTM C 1329

Type	Flexural Bond Strength 28 Days Minimum	
	PSI	MPa
N	70	0.5
S	100	0.7
M	115	0.8

> **Permeability.** Mortar is often exposed to freezing and thawing cycles. Mortars made with Lafarge Mortar Cement withstand these weather extremes with low water absorption rates and increased water repellence. These factors, together with good workmanship, ensure tight and dense joints.

> **Workability and Boardlife.** Plasticity and water retention are important aspects of workability. Lafarge Mortar Cement retains a maximum amount of water to provide plasticity to achieve excellent boardlife.

> **Minimal Shrinkage.** Reducing shrinkage is an important factor in preventing cracks in mortar. In laboratory tests, mortars prepared with Lafarge Mortar Cement demonstrated minimal shrinkage.

> **Mixing.** Mixing is faster and easier, because Lafarge Mortar Cement ingredients come in one bag. Only sand and water must be added on site.

> **Uniformity.** Because ingredients are combined to exact specifications at the Lafarge plant, Lafarge Mortar Cement provides uniform mortar color and strength.



The following table is a suggested guide for the selection of mortar types; however, other considerations, such as climate, exposure, type of masonry unit, applicable building codes and engineering requirements should also be considered.

Suggested Guide for Selection of Mortar Type

Location	Building Segment	Mortar Type	
		Recommended	Alternative
Exterior, above grade	load-bearing wall	S	
	parapet wall	S	
	non-load-bearing wall	N	S
Exterior, at or below grade	foundation walls, retaining walls, manholes, sewers,	S ¹	M
	pavements, walls, patios	M	
Interior	load-bearing wall	S	
	non-load-bearing partitions	N	S

¹ Masonry exposed to weather in a nominally horizontal surface is extremely vulnerable to weathering. Mortar for such masonry should be selected with due caution.



Property Requirements for Mortar¹

Based upon IBC 2103.7(2), ASTM C 270, Table 2, and CSA-A179

Cement Type	Mortar Type	Average Compressive Strength at 28 Days Min.		Water Retention	Air Content
		(Min. Psi)	(MPa)	(Min. %)	(Max. %) ²
Mortar	M	2500	(17.2)	75	12
Cement or	S	1800	(12.4)	75	12
Cement/	N	750	(5.2)	75	14 ³
Lime	O	350	(2.4)	75	14 ³

¹ Laboratory-prepared mortar only.

² Determined in accordance with applicable standards.

³ When structural reinforcement is incorporated in the above noted mortars, the maximum air content shall be 12 percent.

> **Basic Use:** Lafarge Types N, S and M Mortar Cement meet ASTM C 1329 and IBC 2103.7 Standards for Mortar Cement and are used to make Type N, S and M masonry mortars as defined in ASTM C 270. When mixed with 2-1/4 to 3 parts loose, damp masonry sand meeting the requirements of ASTM C 144 and potable water, Lafarge Mortar Cement produces mortar with flexural strengths meeting the requirements of ASTM C1329.

> **Composition and Materials:** Lafarge Mortar Cement is composed of portland cement, plasticizers, and air entraining additives. These components are proportioned at the cement plant under controlled conditions to assure uniformity of performance.

> **Size:** Type N available in 70 lb / 31.8 kg bags, Type S available in 75 lb / 34 kg bags. Type M available in 80 lb / 36.3 kg bags.

> **Limitations:** Lafarge Mortar Cement should be mixed with clean, damp, loose masons' sand and potable water. The use of admixtures in masonry construction should have prior approval by the specifier, comply with ASTM C 1384, and be tested in the mortar at the temperature extremes anticipated at the job site. Insufficient mixing and improper sand contents can reduce the quality of the masonry mortar. Overloading a mixer will reduce masonry mortar quality regardless of length of mixing. See mixing instructions printed on bag.

> **Mixing:** Place 2/3 of the required mixing water and half of the sand in the mixer. Next, add the mortar cement and then add the remaining sand. Mix for two minutes to permit the fluidizing of the ingredients to become effective. Next, add the remaining water to obtain the desired workability. Five minutes of mixing is recommended after all ingredients are in the mixer. At no time should the amount of material in the mixer cover the mixer blades when they are at the top of their travel.

> **Retempering:** Mortars shall be retempered as needed to restore workability. Unused mortar shall be discarded after two hours.

> **Tooling of Joints:** Tooling of masonry mortar joints increases the density, durability, and water resistance of the mortar. Tooling also increases the bond between the masonry mortar and the masonry unit. The moisture content of the masonry mortar at the time of tooling will affect final masonry mortar color. Delayed tooling normally results in darker mortar joints while early tooling will cause lighter joints.



CEMENT



Product Name

Lafarge Mortar Cements:
Type N, Type S and Type M

Manufacturer

Lafarge North America Inc.
Lafarge Building Materials Inc.
12018 Sunrise Valley Drive
Suite 500
Reston, VA 20191

Lafarge Canada Inc.
334 avenue Avro
Pointe-Claire, Quebec H9R 5W5

www.lafarge-na.com

Technical Data

Lafarge Mortar Cement is suitable for all masonry construction, especially projects that require higher flexural bond and compressive strengths.

> **Applicable standards:** Lafarge Mortar Cement conforms to the requirements of ASTM C 270 *The Standard Specifications for Mortar for Unit Masonry* and International Building Code Section 2103.7. When mixed with sand meeting the requirements of ASTM C 144 *Standard Specification for Aggregate for Masonry Mortar* and an appropriate amount of water, Lafarge Types N, S and M Mortar Cement will result in Type N, S and M Mortar (respectively) meeting the requirements of ASTM C 270, ASTM C 1329 and IBC 2103.7(2).

A certificate attesting to this will be furnished by the manufacturer upon request.

Precautions

Direct contact with wet cement should be avoided. If contact occurs, the skin should be washed with water as soon as possible. Exposure can cause serious, potentially irreversible tissue destruction in the form of chemical (caustic) burns. If cement gets into the eyes, immediately rinse thoroughly with water and seek medical attention. For more information, reference the applicable Lafarge Material Safety Data Sheet (MSDS). The MSDS should be consulted prior to use of this product and is available upon request and online at www.lafarge-na.com.

Limited Warranty

Lafarge warrants that Lafarge Mortar Cement meets the requirements of ASTM C 1329, IBC 2103.7 and CSA-A179. Lafarge makes no other warranty, whether of merchantability or fitness for a particular purpose with respect to Lafarge Mortar Cement. Having no control over its use, Lafarge will not guarantee finished work in which Lafarge Mortar Cement is used.



LAFARGE NORTH AMERICA INC.
LAFARGE BUILDING MATERIALS INC.
12018 Sunrise Valley Drive
Suite 500
Reston, VA 20191

LAFARGE CANADA INC.
334 avenue Avro
Pointe-Claire, Quebec H9R 5W5

www.lafarge-na.com